

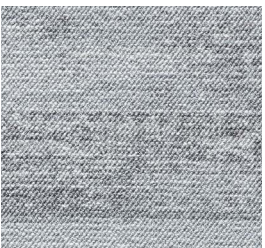
CONSTRUCTION	Tufting 1/10" loop pile	PERMANENTLY ANTISTATIC	ISO 6356
STRUCTURE	Tufté 1/10" bouclé	ANTISTATIQUE PERMANENT	< 2 kV
STRUKTUR	Getuftet 1/10" Schlinge	PERMANENT ANTISTATISCH	
STRUCTUUR	Getuft 1/10" lussenpool	PERMANENT ANTISTATISCH	
PILE MATERIAL	100% PA 6 IMPREL®	IMPACT NOISE RATING	ISO 140-8
COMPOSITION DU VELOURS		ISOLATION PHONIQUE	25 dB ΔLw
POLMATERIAL		TRITTSCHALLVERBESSERUNG	
POOLMATERIAAL		GELUIDSISOLATIE	
PRIMARY BACKING	Non woven PES	SOUND ABSORPTION	ISO 354
SUPPORT	Non tissé PES	ABSORPTION PHONIQUE	0.15 αw
TRÄGERMATERIAL	Vlies, PES	SCHALLABSORPTIONSGRAD	
TUFTDOEK	Vilt, PES	GELUIDSABSORPTIE	
SECONDARY BACKING	Action Back	THERMAL RESISTANCE	ISO 8302
DOSSIER		RÉSISTANCE THERMIQUE	0.07 m² K/W
RÜCKEN		WÄRMEDURCHLASSWIDERSTAND	
TAPIJTRUG		WARMTEDOORLAATWEERSTAND	
PILE WEIGHT	Ca. 640 gr/m²	FASTNESS TO LIGHT	ISO 105-B02
POIDS DU VELOURS		SOLIDITÉ A LA LUMIÈRE	≥ 5-6
POLEINSATZGEWICHT		LICHTECHTHEIT	
POOLGEWICHT		LICHTECHTHEID	
TOTAL WEIGHT	Ca. 1.711 gr/m²	COLOUR FASTNESS TO WATER	EN ISO 105-E01
POIDS TOTAL		SOLIDITÉ À L'EAU	≥ 4-5
GESAMTGEWICHT		WASSERRECHTHEIT	
TOTAAL GEWICHT		WATERECHTHEID	
PILE HEIGHT	Ca. 3,1 mm	RUBBING FASTNESS	EN ISO 105-X12
EPAISSEUR DU VELOURS		SOLIDITÉ AU FROTTEMENT	≥ 4
POLHÖHE		REIBECHTHEIT	
POOLHOOGTE		WRIJFECHTHEID	
TOTAL HEIGHT	Ca. 5,8 mm	FIRE RESISTANCE	EN 13501-1
EPAISSEUR TOTALE		COMPORTEMENT AU FEU	Cfl-s1
GESAMTHÖHE		BRENNVERHALTEN	
TOTALE DIKTE		BRANDGEDRAG	
TUFT DENSITY	Ca. 218 400/m²	WIDTH	EN ISO 3018
NOMBRES DE POINTS		LARGEUR	ca. 400 cm
NOPPENZAHL		BREITE	
AANTAL PUNTEN		BREEDTE	
PILE DENSITY	Ca. 0.118 g/cm³		
DENSITÉ DU VELOURS			
POLROHDICHTÉ			
POOLDICHTHEID			
CLASSIFICATION	EN 1307		
CLASSEMENT	33 - LC1		
KLASSIFIKATION			
CLASSIFICATIE			
CASTOR CHAIR SUITABILITY	EN 985		
CHAISE À ROULETTES	A: intensive use		
STUHLROLLENEIGNUNG			
ROLSTOELGESCHIKTHEID			
STAIR SUITABILITY	EN 1963		
ESCALIERS	A: intensive use		
TREPPENEIGNUNG			
TRAPPENGESCHIKTHEID			



RV alethea



↔ ca. 196 x ⇅ ca. 295 cm



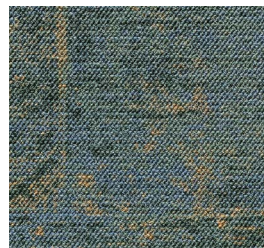
▲ 93



▲ 99



▲ 14



▲ 27



▲ 32



▲ 43



▲ 45



▲ 98



▲ 79



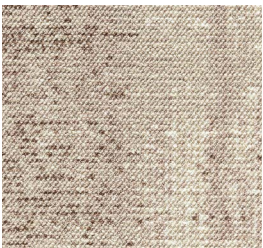
▲ 39

 arc edition

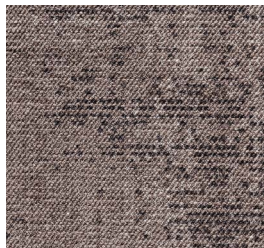
RV **promethea**



↔ ca. 199 x ⇅ ca. 193 cm



▲ 43



▲ 45



▲ 98



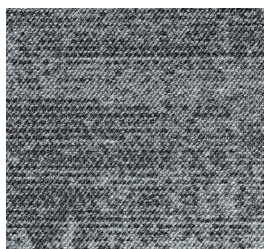
▲ 79



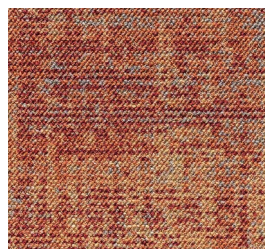
▲ 39



▲ 93



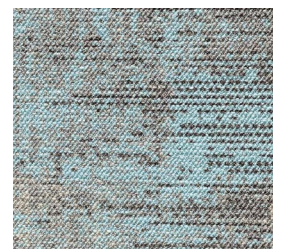
▲ 99



▲ 14



▲ 27

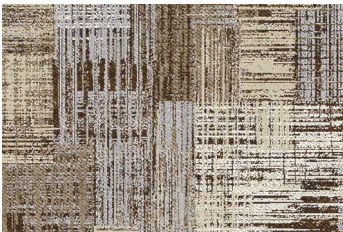


▲ 32

 **arc edition**

Grace The Vintage Collection

SPECIAL PRODUCTION



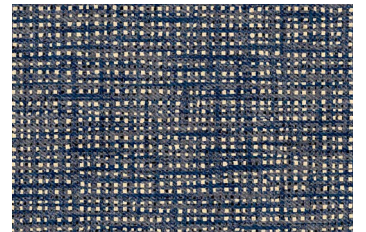
▲ RV Seraphina 43



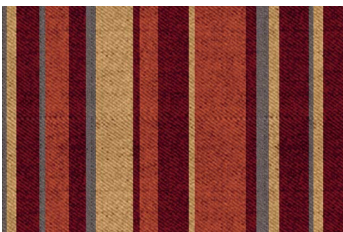
▲ RV Louvinia 34



▲ RV Celestia 43



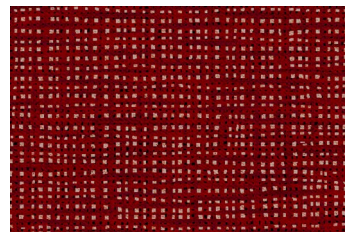
▲ RV Coralia 73



▲ RV Ludmilla 15



▲ RV Celestia 15



▲ RV Coralia 15



▲ RV Louvinia 73



▲ RV Celestia 32



▲ RV Seraphina 92



▲ RV Ludmilla 92



▲ RV Ludmilla 73

RV Celestia ⇄ ca. 196 x ⇄ ca. 190 cm
RV Coralia ⇄ ca. 98 x ⇄ ca. 95 cm

RV Louviana ⇄ ca. 98 x ⇄ ca. 95 cm
RV Ludmilla ⇄ ca. 50
RV Seraphina ⇄ ca. 196 x ⇄ ca. 190 cm

 arc edition