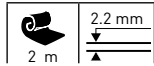
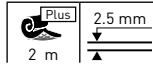


TARASAFE SUPER & PLUS

SUPER



PLUS



High performance vinyl safety flooring for contract applications

Performances and benefits



Brighter, cleaner surface that adds real sparkle



Easier to install, lighter & more flexible to handle



High resistance to heavy traffic



Easier to cut-up 5 times more blade life



100% recyclable & contains recycled materials



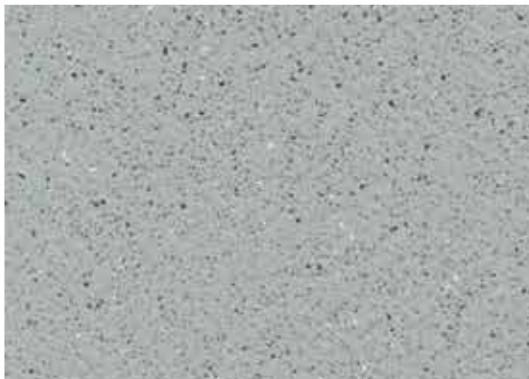
7731 Marbre

LRV: 51.2
WR: 0509



7386 Savana

LRV: 44.0
WR: 0645



7767 Dove Grey

LRV: 34.1
WR: 0336



7438 Baleine

LRV: 21.0
WR: 0638



7302 Sahara

LRV: 35.1
WR: 0094



Compact sheet without foam backing



Compact sheet with textile backing

LRV: Light Reflectance Value

WR: Welding Rod = 0585 + colour code number

Suitable for heavy traffic applications

* For more details visit the greenguide.org.uk

TARASAFE SUPER and **TARASAFE PLUS** are slip resistant safety vinyl floorcoverings, with a PVC wear layer and deeply **inlaid mineral crystal particles** (patented). They are reinforced by a glass fibre grid and available in a sheet format. They are an ideal solution for **heavy traffic applications** where slip resistance, durability, hygiene and easy maintenance are required.

TARASAFE PLUS comprises a textile backing for better adherence in wet areas. It helps reducing telegraphing.

TARASAFE SUPER and **PLUS** are suitable for most contract & commercial areas. They are eco-friendly, 100% recyclable, Floorscore® certified and do not contain any heavy metals or CMR 1&2, they are also 100% compliant with REACH.

The product emission rate of volatile organic compounds is < 100 µg/m³ (TVOC after 28 days – ISO 16000 -6).

TARASAFE SUPER

TARASAFE PLUS

DESCRIPTION

| | | | | |
|------------------------|-----------------------|------------------|--------|--------|
| Total Thickness | EN ISO 24346 [EN 428] | mm | 2.20 | 2.50 |
| Thickness of wearlayer | EN ISO 24340 [EN 429] | mm | 1.12 | 1.14 |
| Weight | EN ISO 23997 [EN 430] | g/m ² | 2880 | 3090 |
| Width/Length of Sheet | EN ISO 24341 [EN 426] | cm/lm | 200/20 | 200/20 |

CLASSIFICATION

| | | | | |
|---|-----------------------|-------|-----------------------|-----------------------|
| Norm/Product Specification | - | - | EN ISO 10582 [EN 649] | EN ISO 10582 [EN 649] |
| European classification | EN ISO 10874 [EN 685] | class | 34-43 | 34-43 |
| Fire Rating | EN 13501-1 | class | Bfl-s1 | Bfl-s1 |
| Static electrical propensity | EN 1815 | kV | < 2 | < 2 |
| Slip resistance wet: ramp test with oil | DIN 51 130 | class | R12 | R10 |

PERFORMANCE

| | | | | |
|---|-------------------------|-----------------|-----------------------|-----------------------|
| Wear Resistance | EN 660.2 | mm ³ | ≤ 2 | ≤ 2 |
| Wear group | NF 189 | group | T | T |
| Type Binder content | EN ISO 10582 | type | I | I |
| Dimensional stability | EN ISO 23999 [EN 434] | % | ≤ 0.40 | ≤ 0.40 |
| Residual indentation | EN ISO 24343-1 [EN 433] | mm | ≤ 0.10 | ≤ 0.10 |
| Residual indentation (average measure) | - | mm | ≈ 0.03 | - |
| Castor chair test (type W) | ISO 4918 [EN 425] | - | OK | OK |
| Thermal conductivity | EN ISO 10456 [EN 12524] | W/(m.K) | 0.25 | 0.25 |
| Colour fastness | EN 20 105-B02 | degree | ≥ 6 | ≥ 6 |
| Chemical products resistance | EN ISO 26987 [EN 423] | - | OK | OK |
| Anti-bacterial activity (MRSA) ^[1] | ISO 22196 | - | > 99% Inhibits growth | > 99% Inhibits growth |

ENVIRONMENT / INDOOR AIR QUALITY

| | | | | |
|--------------------|-------------|-------------------|-------------|-------|
| TVOC after 28 days | ISO 16000-6 | µg/m ³ | < 100 | < 100 |
| Certification | - | - | Floorscore® | - |

CE MARKING

| | | | |
|----|-----------|---|--|
| CE | EN 14 041 | - | |
| | | | |

[1] The implementation of an effective cleaning method is the best defence against infection.



Installation and Maintenance Guidelines, Complementary ranges available on our Gerflor website.

IMPORTANT: The information contained in this document is valid from 01/04/2018 and is subject to change at any time without notice. In the context of constantly changing technology, our customers are responsible, prior to any use, for checking with us that this document is the version in force.

Rubber leaves indelible stains on vinyl floorings: do not use mats with rubber backing and replace tubular furniture feet with those made of PVC or polyamide. Place mats of sufficient length at entrances to reduce outside sources of dirt.

TARASAFE PLUS & SUPER, **LESS SPEAKING FOR MORE ACTIONS**

| | | | | |
|--------------------------------------|---|----------------------------------|--|--------------------------------------|
| COMPOSITION 100% REACH | INDOOR AIR QUALITY 10 times lower than norms requirements (TVOC < 100 µg/m ³ after 28 days) | RECYCLABILITY 100% | LCA Eco-designed according to a product specific life cycle analysis | WELLNESS Anti slip R10 |
|--------------------------------------|---|----------------------------------|--|--------------------------------------|